

Balmer Lawrie eProcurement Portal

URL: <https://balmerlawrie.eproc.in>

System setting manual

System Configuration:

Pre-Requisites:

- Minimum RAM : 1 GB
- Minimum USB Ports: 2
- DSC Dongle driver should be installed before Registration and logging in
- Reliable Internet Connectivity.
- Certificate with full chain.
- Certificate should not be expired. It should be valid certificate

Operating System

- Windows 7 and above

Browser Version

- Internet Explorer Version: 11

JAVA Version

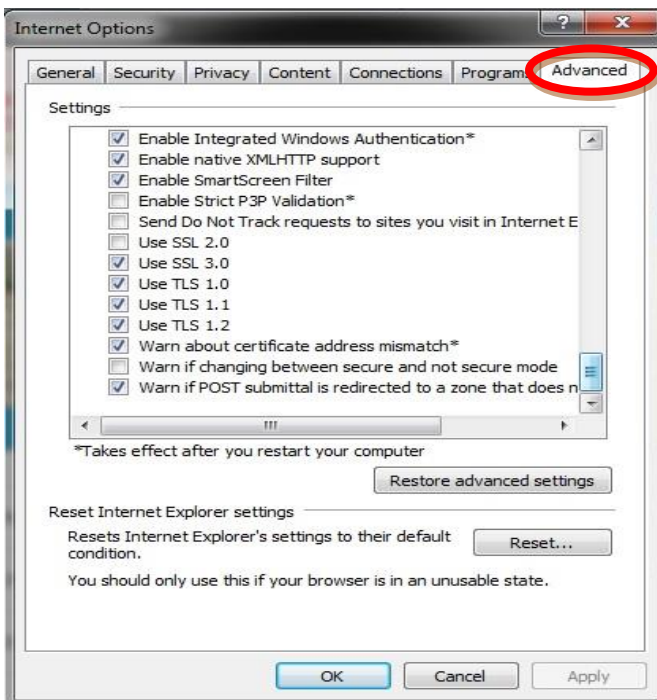
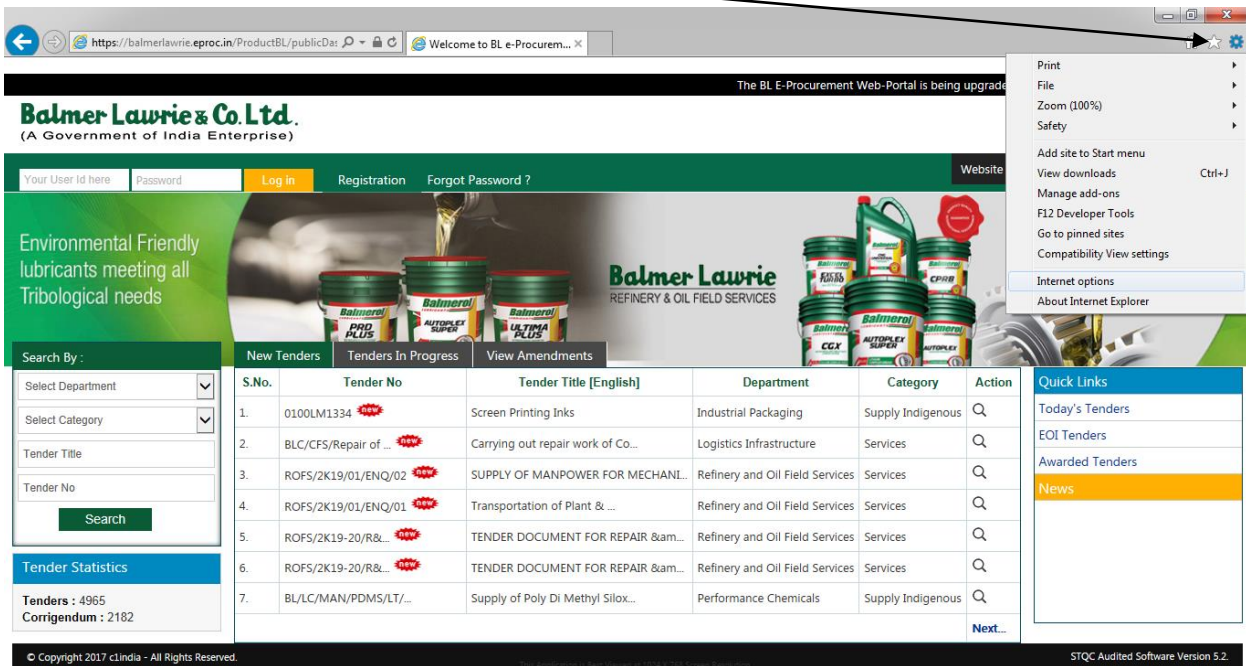
- Java 8 update 77 (32 bit) and above

DSC

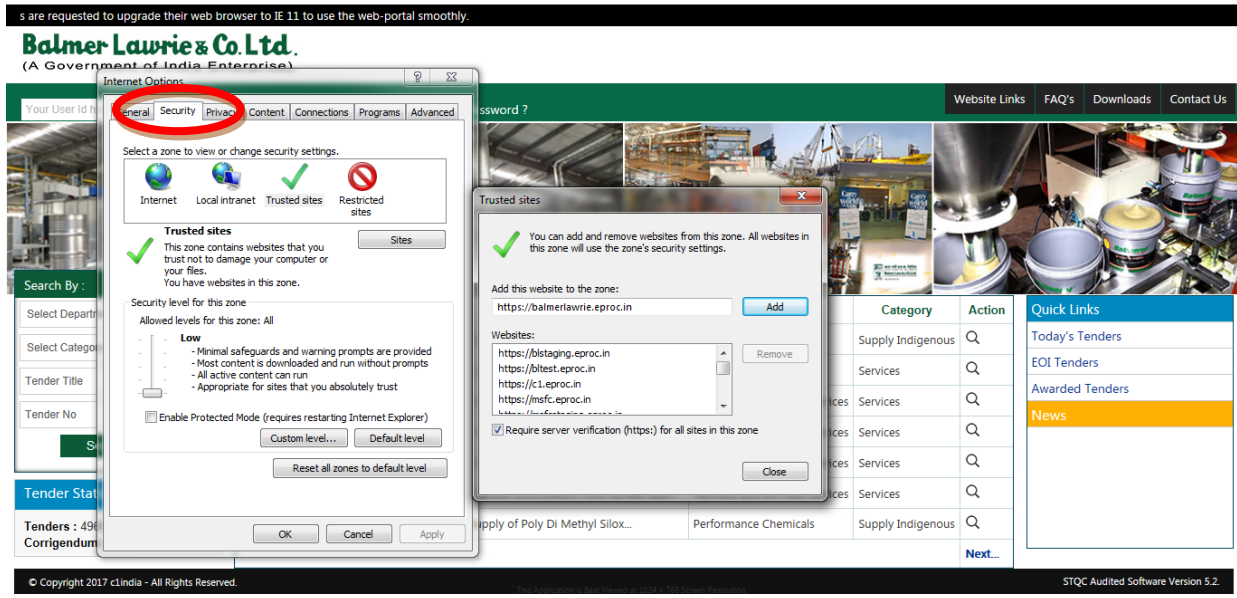
- Class 2(b) or Class 3 (Signing and Encryption): Install DSC Driver and check Signing and Encryption both DSC component.

Step 1: Open Internet Explorer Browser 11

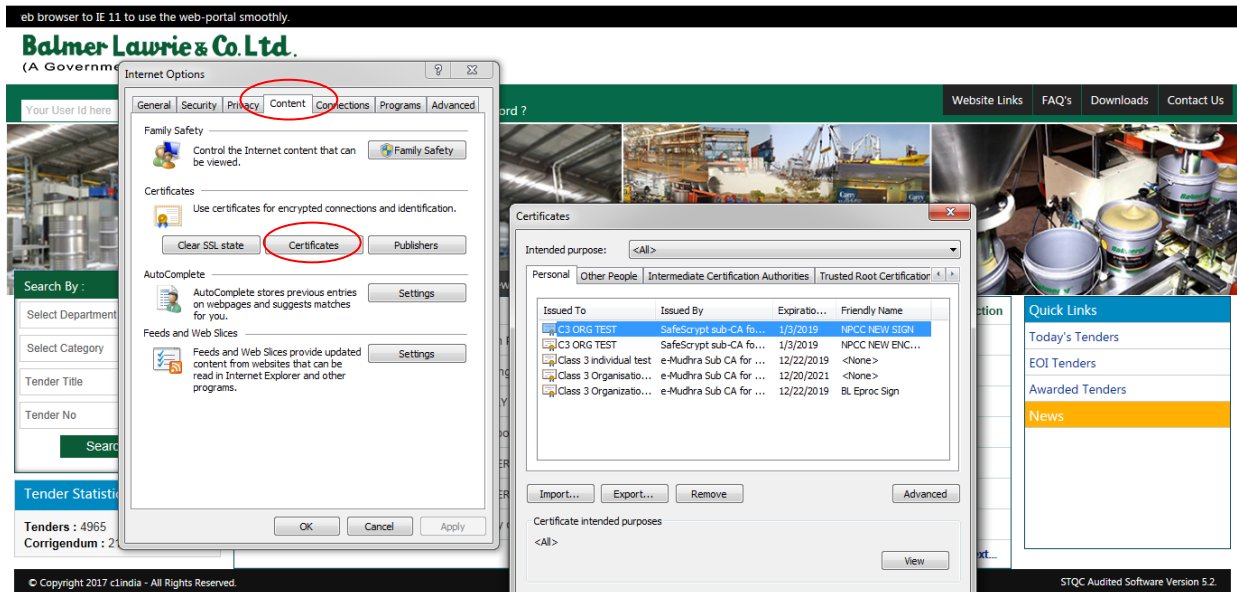
Go to Internet explorer Tools >> Click Internet Option >> Advance >> click use SSL 3.0, 1.0, 1.1, 1.2



Step 2: Go to Internet explorer Tools >>Click Internet Option >> security>> Click on “Trusted Sites” and select Sites and add the URL <https://balmerlawrie.eproc.in>



Step 3: Go to Internet explorer Tools >> Click Internet Option>> Click Content Tab>> click Certificate>> check two Certificates (Signing and Encryption) both component.



Step 4: Go to Internet explorer Tools>> Click Manage Add ons>> Check Java Enabled

The BL E-Procurement Web-Portal is being upgraded. All website users are requested to use the old version of the portal.

Balmer Lawrie & Co. Ltd.
(A Government of India Enterprise)

Your User Id here Password Log in Registration Forgot Password ? Website Links FAQ's Downloads Contact Us

Environmental Friendly lubricants meeting all Tribological needs

Search By :
Select Department
Select Category
Tender Title
Tender No
Search

Tender Statistics
Tenders : 4965
Corrigendum : 2182

Copyright 2017 c.lindia - All Rights Reserved.

STQC Audited Software Version 5.2

Manage Add-ons
View and manage your Internet Explorer add-ons

Add-on Types	Name	Publisher	Status	Architecture	Load time
Toolsbars and Extensions	Send to OneNote	Not Available	Enabled	32-bit	
	Research	Not Available	Enabled	32-bit	
	Discuss	Not Available	Disabled	32-bit	
Accelerators	Oracle America, Inc.				
	Java SE Runtime Environment 8...	Oracle America, Inc.	Enabled	32-bit	
	Deployment Toolkit	Oracle America, Inc.	Enabled	32-bit	
	Java(tm) Plug-In SSV Helper	Oracle America, Inc.	Enabled	32-bit	0.00 s
	Java(tm) Plug-In 2 SSV Helper	Oracle America, Inc.	Enabled	32-bit	0.03 s

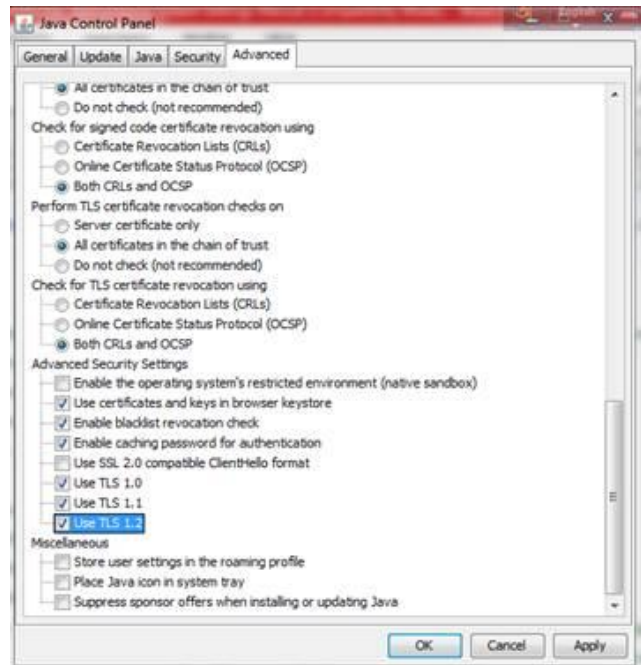
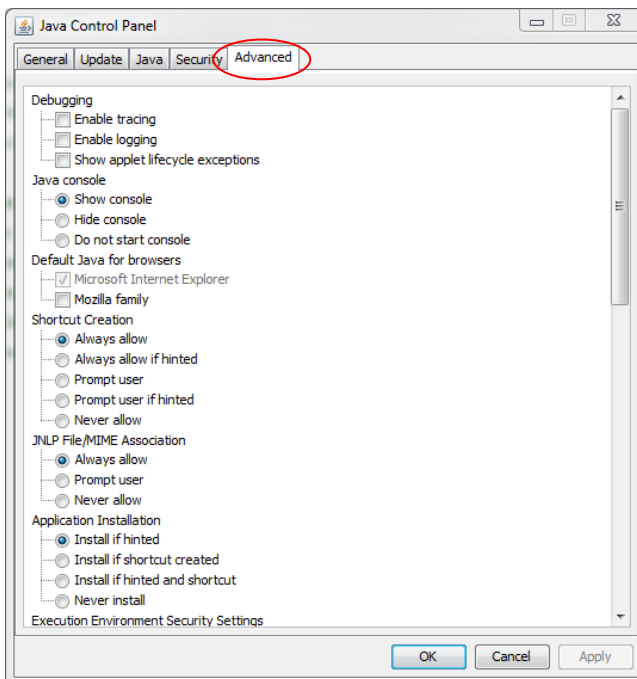
Show: Currently loaded add-ons

Select an add-on to modify status or view details.

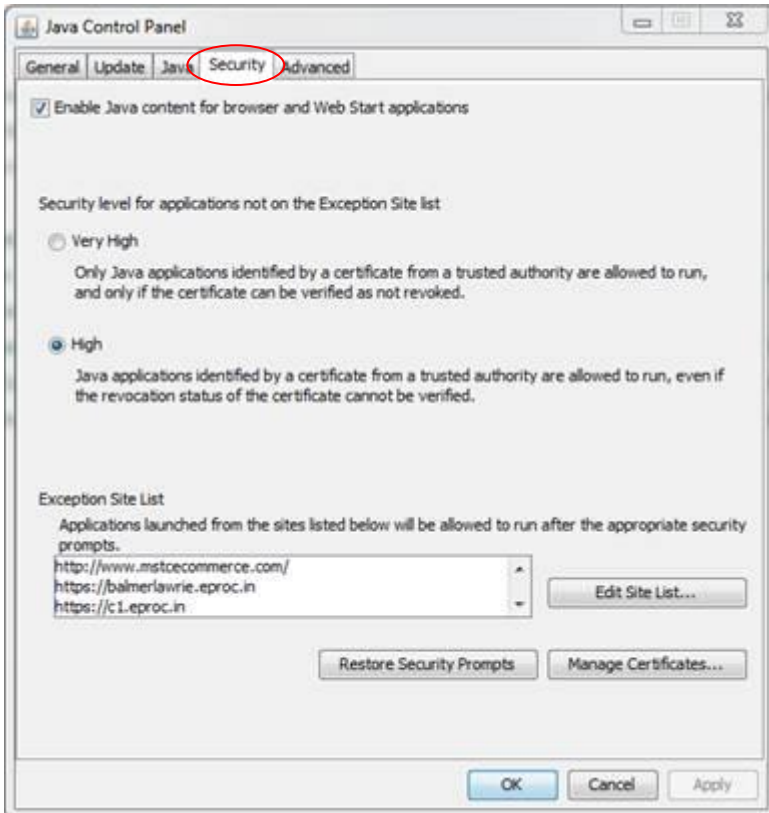
Quick Links
Today's Tenders
EOI Tenders
Awarded Tenders
News

Step 5: JAVA CONFIGURATION: - Install Java 8 update 77(32 bit) and above

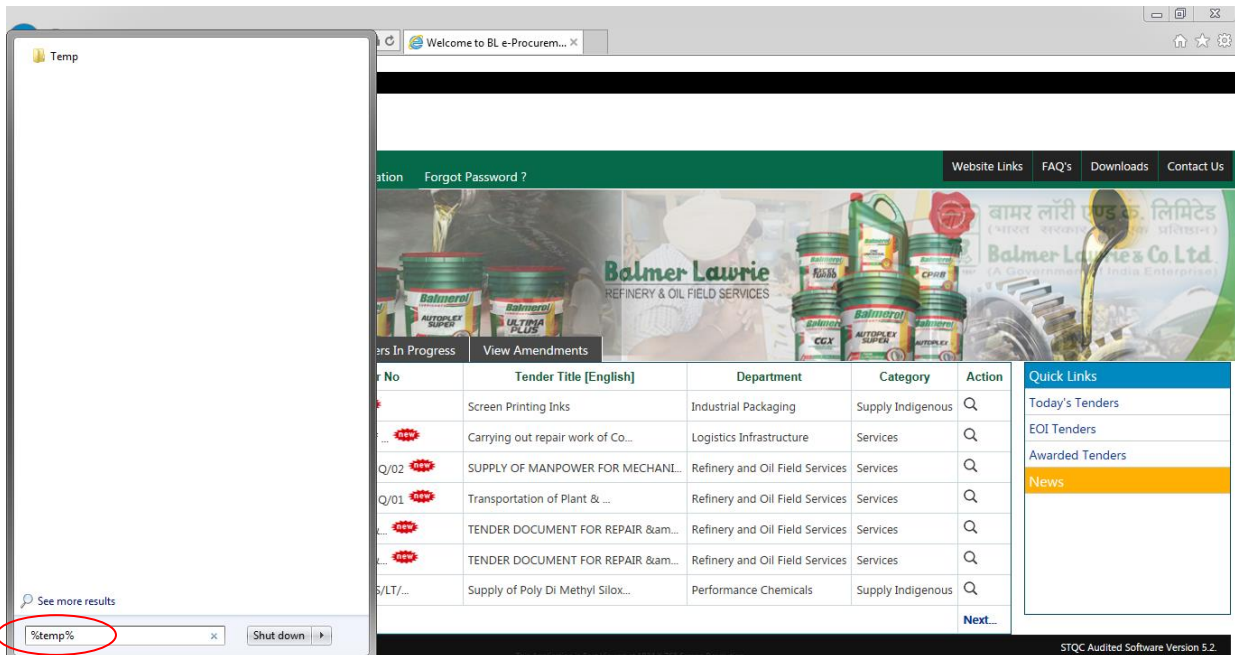
Go to control panel>> click java 32 bit>> Click Advance>> Go down and click TLS 1.0, 1.1 & 1.2



Kindly Add <https://balmerlawrie.eproc.in> site in Java Security Zone add edit site list.



Step 6: System should be free from viruses or any other malicious software and Temporary files are cleaned. Kindly restart your machine once above-mentioned setting are completed.



After doing all these settings, if still you are facing any issues please contact below mentioned details.

HELPDESK NOS ARE OPEN BETWEEN 1000 HRS to 1830 HRS IST (MONDAY TO FRIDAY (Exclusions: Balmer Lawrie HOLIDAYS))			
Please email your issues before your call helpdesk. This will help us serving you better.			
Balmer Lawrie & Co Ltd. , 21, Netaji Subash Road, Kolkata - 700 001			
Dedicated email : blsupport[at]c1india[dot]com			
Dedicated Helpdesk for Balmer Lawrie			
Contact Person	E-Mail ID	Tel. No.	Helpdesk Nos are open from
1. Mr.TirthaDas (Kolkata)	tirtha.das@c1india.com	+91-9163254290	MON - FRI
2. Mr.Partha Ghosh (Kolkata)	partha.ghosh@c1india.com	+91-8811093299	MON - FRI
3. Mr. CH. Mani Sankar (Chennai)	chikkavarapu.manisankar@c1india.com	+91-6374241783	MON - SAT
4. Ms. Ujwala Shimpi (Mumbai)	ujwala.shimpi@c1india.com	+91-22-66865608	MON - FRI
5. Helpdesk Support (Kolkata)		+91-8017272644	MON - SAT
Escalation Level 1			
Mr.Tuhin Ghosh	tuhin.ghosh@c1india.com	+91-8981165071	